

# Measuring Up

*Is a Province wide initiative to ensure that accessibility & inclusion is provided for all people.*

# Provincial History

```
graph LR; A[Province of BC 2010 Legacy $2 million Grant for Measuring Up Accessibility and Inclusion] --- B[Distributed to BC Communities to support projects]; A --- C[People with disabilities actively participating & contributing to their communities]; A --- D[The Goal – Building the best system of support for people with disabilities];
```

Province of BC 2010 Legacy  
\$2 million Grant for Measuring Up  
Accessibility and Inclusion

Distributed to BC Communities  
to support projects

People with disabilities actively  
participating & contributing to their communities

The Goal – Building the best system of support  
for people with disabilities

# Using Measuring Up as a Guide

<b><i>Self Directed</i></b>	<b><i>Practical</i></b>	<b><i>Inclusive</i></b>	<b><i>Collaborative</i></b>
Each community designs its own plan	Fosters local solutions & Learning between communities	Actively involving the whole community	Engages: <ul style="list-style-type: none"><li>●Municipal</li><li>●Business</li><li>●Other Community leaders</li></ul>

# The Mandate for Measuring Up

- An advisory committee on disability issues.
- Work with City Council and staff to create a city where persons with disabilities are fully enfranchised citizens.
- To identify and suggest solutions to gaps and barriers that impede the full participation of all persons in all aspects of City life.

# Mission Statement for Measuring Up

- To encourage and facilitate accessibility and inclusion on behalf of all members of our community.

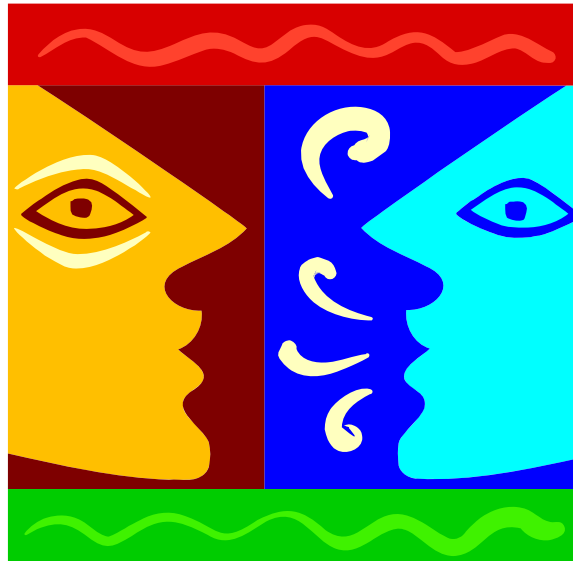


# Goals

- Improve access to:
  - Housing
  - Transportation
  - Education
  - Recreation
  - Employment

# The Process for Advancing *accessibility* and *inclusion*

- Dialogue - helps people to understand the needs of others



# Membership, Structure, and Procedure

- Suggested Committee – up to 12 members who will agree to serve, give input and facilitate the work.
- Demonstrate experience related to the mandate
- At least 25% of the committee membership will reflect all types of disabilities.
- City Council will appoint one liaison Councilor and one City staff member to the committee.
- Representation of interested Community members, support groups and organizations.

# Local History

- The Powell River Measuring up Committee was established by City Council in 2006
- The committees goals both short and long term:
  - Raise awareness
  - Actively promote the ways and means to ensure access and inclusion for Powell Riverites of all ability levels

## Recent Efforts and Accomplishments

- Awarded \$80,000 through *Vancouver Foundation* and *2010 Legacies Now* grant
- Projects:
  - Jump radio show – “Inclusion Today”
  - Rick Hanson – Wheels in Motion Event equipment grant
  - 2007 Powell River Disability Games
- Community input - May 2007 Public Forum
- Dialogue with City department managers and Union reps encouraging employment advocates

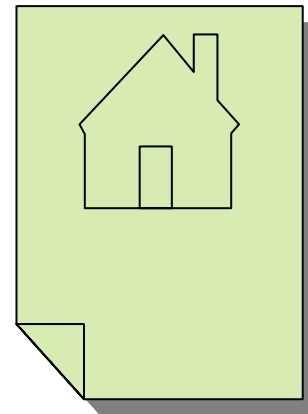
# Recent Efforts and Accomplishments

## Projects

- Extension and Distribution of the 2008/2009 Powell River Business & Access Guide with a new tourism section
- Exploring strategies for increasing accessible tourism in the region
- Encouraged dialogue to ensure the upgrading and repair of the Inland Lake Provincial Park accessible trail
- Awareness of employment needs and opportunities – for both employer and employee
- Dialogue regarding the need for housing designed for disabled
- Dialogue regarding availability of home care and assisted living

# How does P.R. Measure Up?

- As a place where people can easily:
  - Live
  - Work
  - Play
  - Visit



## Discussion Item

- What guidelines are needed to assist communities in accessing how accessible they really are?
  - 1.
  - 2.
  - 3.
  - 4.

# How does P.R. Measure Up?

- Consider how accessible is it for people with:
  - Sight disabilities
  - Hearing disabilities
  - Personal mobility challenges
  - Canes, walkers, guide dogs
  - Requirement to use motorized equipment
  - Brain injury
  - Invisible disabilities /Health issues
  - Baby carriages
  - Tourists with luggage
  - People with injuries
  - Other

# How does P.R. Measure Up?

- Consider how inclusive P.R. is of issues that effect the daily living of people living with disabilities:
  - Children /Youth
  - Young Adult
  - Adults
  - Seniors

# How does P.R. Measure Up?

## Re: Accessibility and Inclusion for:

- Provision of employment opportunities?
- Improving work places?
- Improving recreation facilities?
- Improving restaurants?
- Improving shops and malls?
- Improving parking access?
- Improving transportation?
- Improving communication?

**Please reflect on your personal experiences  
to suggest ways and means for  
improvement so everyone can benefit!**

- **Access to:**

- Education
- **Housing**
- Multiculturalism
- **Recreation**
- Employment
- **Transportation**
- Health/Home care
- **Funding**
- Resources
- **Other**

- **Challenges with:**

- Schools
- **Businesses**
- Federal Government
- **Local Government**
- Support organizations
- **Financial institutions**
- Health care providers
- **Communication**
- Other

# Action plan

- Identify what is offered – Where are we now?
- Identify what is needed - Look for ways to include people with disabilities.
- Decide where we want to be.
- What is possible – short term / long term
- Funding sources?
- Commitment to the process.
- Dialogue on a regular basis.
- Map out strategies for Measuring Up.

# The Positive Assets for Powell River!

**The people**  
Together we can make a difference!

Powell River is a  
community of people that care.

Thank you for this time to dialogue.



Powell River - Measuring Up Committee